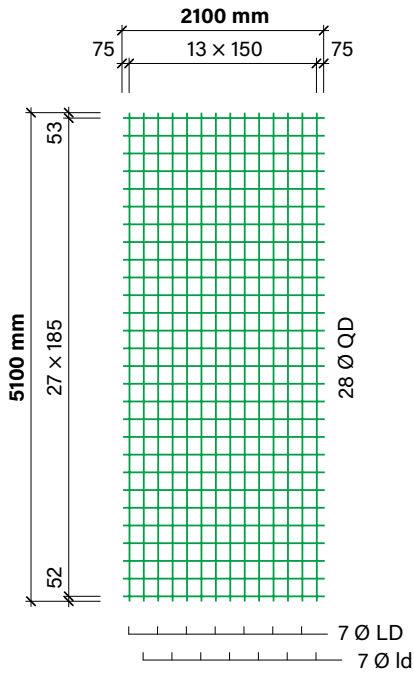


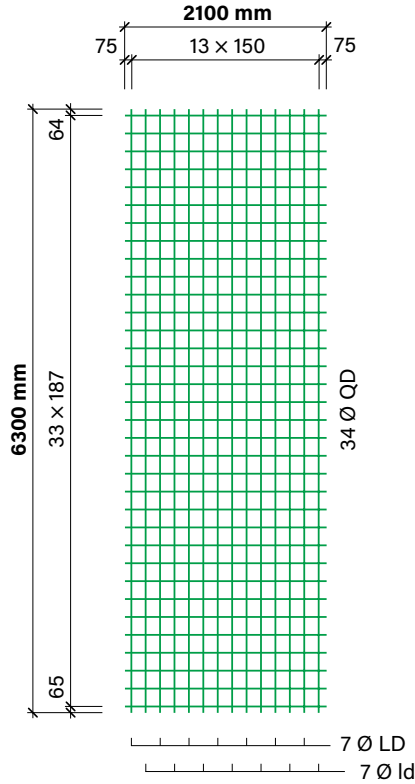
wama 500

Prodotti in rete | RUWA Reti standard | in acciaio d'armatura B500B

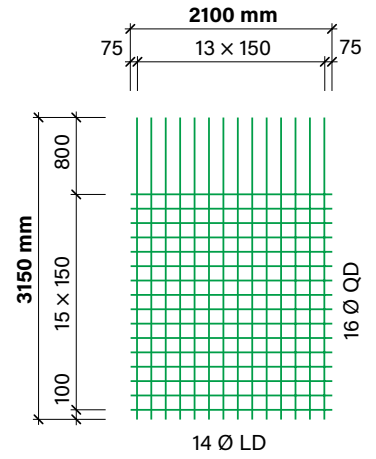
HX 424.51



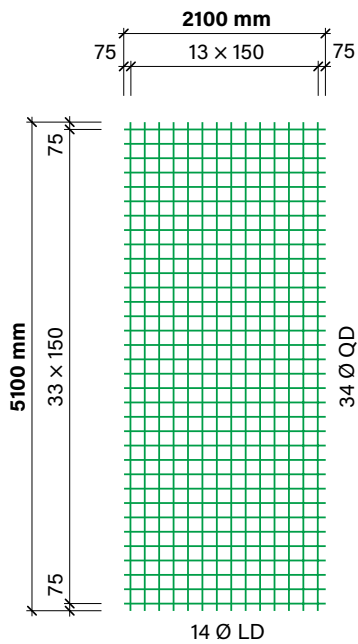
HX 424.63



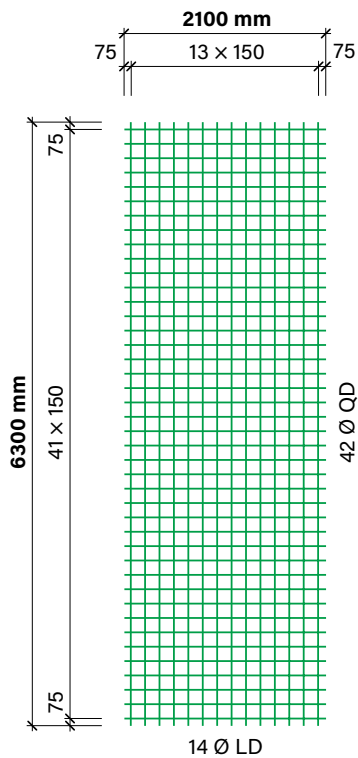
HW 335



**HX 335.51
HX 523.51**



**HX 335.63
HX 523.63**



wama 500

Prodotti in rete | RUWA Reti standard | in acciaio d'armatura B500B

Formato L x L [m]	Tipo	Passo		Diametro		Sezione a _s		Sormonta min.		Peso	
		long.	trasv.	ld / LD	QD	long.	trasv.	trasv. I _b	long. I _b	rete	m ²
		[mm]	[mm]	[mm]	[mm]	[mm ² /m]	[mm ² /m]	[mm]	[mm]	[kg]	[kg/m ²]

Reti per armature biassiali in acciaio d'armatura B500B

5.10 × 2.10	HX 335.51	150	150	8	8	335	335	350	350	56.4	5.27
6.30 × 2.10	HX 335.63	150	150	8	8	335	335	350	350	69.7	5.27
5.10 × 2.10	HX 424.51	150	185	8/10	10	424	424	400	400	71.3	6.65
6.30 × 2.10	HX 424.63	150	187	8/10	10	424	424	400	400	88.0	6.65
5.10 × 2.10	HX 523.51	150	150	10	10	523	523	400	400	88.1	8.23
6.30 × 2.10	HX 523.63	150	150	10	10	523	523	400	400	108.8	8.23

Reti d'armatura per pareti in acciaio d'armatura B500B

3.15 × 2.10	HW 335	150	150	8	8	335	335	350	-	30.7	4.64
-------------	---------------	-----	-----	---	---	-----	-----	-----	---	------	------

Denominazione delle reti

La denominazione del tipo contiene i seguenti parametri:

HX 335.63

