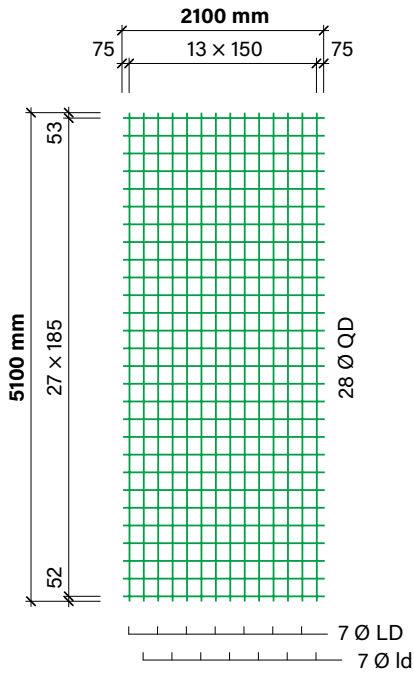


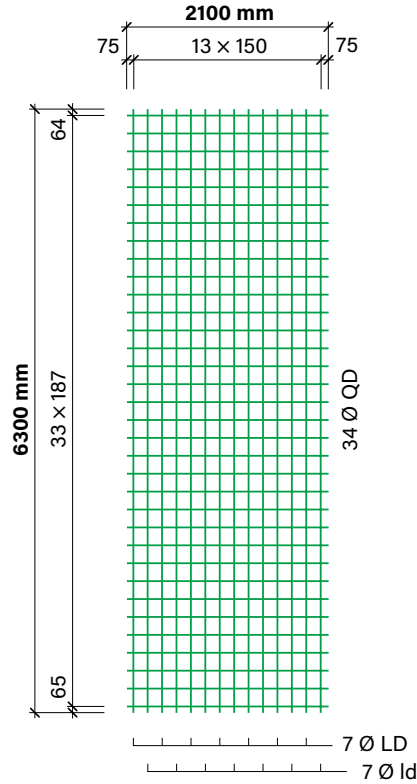
# wama 500

Matten-Produkte | RUWA Lagermatten | in Betonstahl B500B

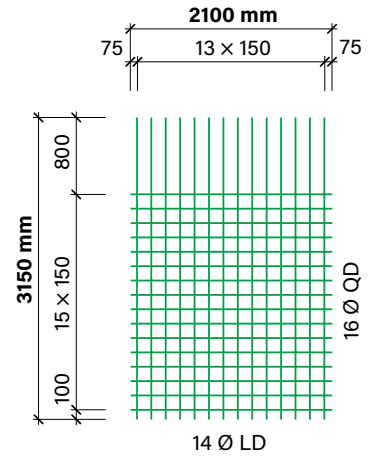
**HX 424.51**



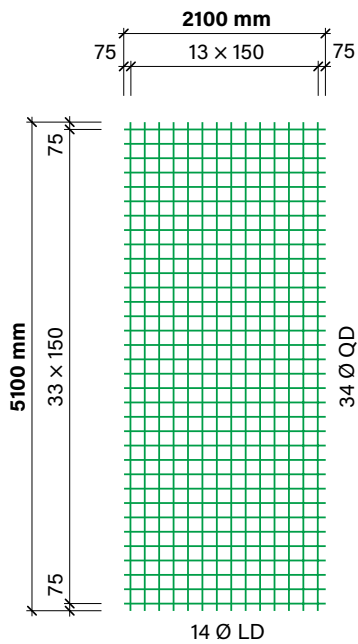
**HX 424.63**



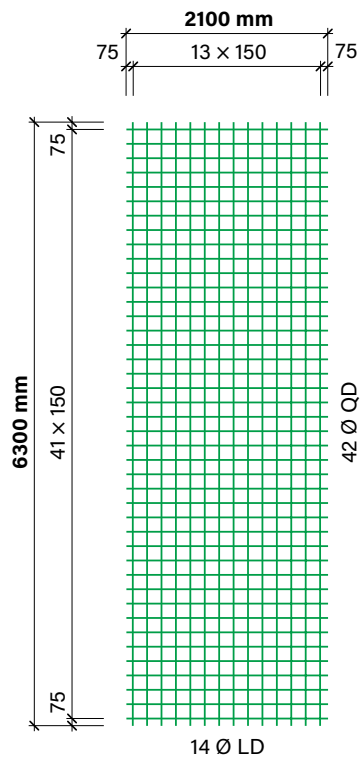
**HW 335**



**HX 335.51  
HX 523.51**



**HX 335.63  
HX 523.63**



# wama 500

Matten-Produkte | RUWA Lagermatten | in Betonstahl B500B

Format L × B [m]	Typ	Teilung		Durchmesser		Querschnitt $a_s$		Stoss min.		Gewicht	
		längs	quer	ld / LD	QD	längs	quer	quer $l_b$	längs $l_b$	Matte	$m^2$
		[mm]	[mm]	[mm]	[mm]	[mm <sup>2</sup> /m]	[mm <sup>2</sup> /m]	[mm]	[mm]	[kg]	[kg/m <sup>2</sup> ]

## Matten für biaxiale Bewehrungen aus Betonstahl B500B

5.10 × 2.10	<b>HX 335.51</b>	150	150	8	8	335	335	350	350	56.4	5.27
6.30 × 2.10	<b>HX 335.63</b>	150	150	8	8	335	335	350	350	69.7	5.27
5.10 × 2.10	<b>HX 424.51</b>	150	185	8/10	10	424	424	400	400	71.3	6.65
6.30 × 2.10	<b>HX 424.63</b>	150	187	8/10	10	424	424	400	400	88.0	6.65
5.10 × 2.10	<b>HX 523.51</b>	150	150	10	10	523	523	400	400	88.1	8.23
6.30 × 2.10	<b>HX 523.63</b>	150	150	10	10	523	523	400	400	108.8	8.23

## Matten für Wandbewehrungen aus Betonstahl B500B

3.15 × 2.10	<b>HW 335</b>	150	150	8	8	335	335	350	-	30.7	4.64
-------------	---------------	-----	-----	---	---	-----	-----	-----	---	------	------

### Mattenbezeichnung

Die Typenbezeichnung enthält folgende Parameter:

### HX 335.63

