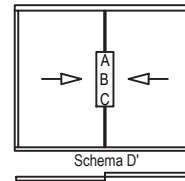
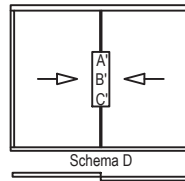
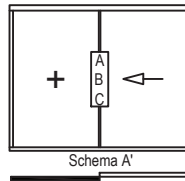
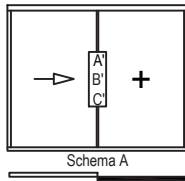
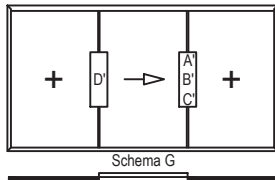


Öffnungsarten Flügel innen (Ansicht von Aussen)

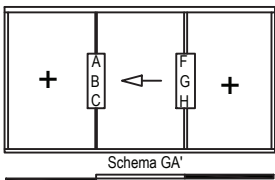
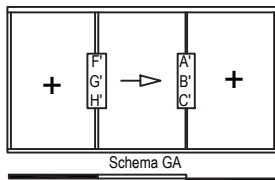
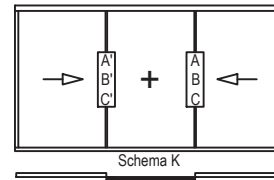
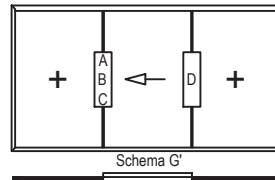
Types d'ouverture vantail intérieur (vue de l'extérieur)



Anwendung nur im Innenbereich!
Utilisation que à l'intérieur!



Anwendung nur im Innenbereich!
Utilisation que à l'intérieur!

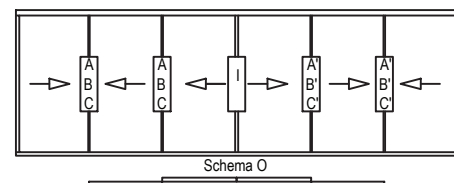
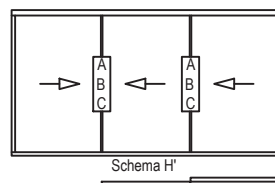
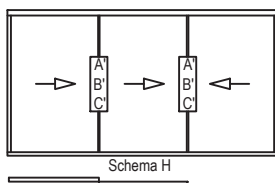
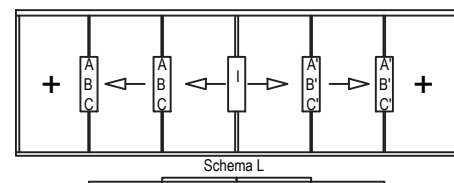
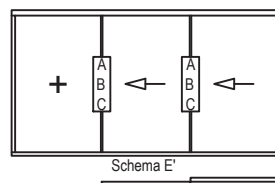
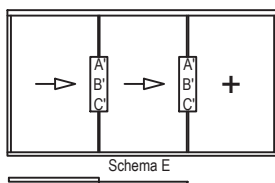
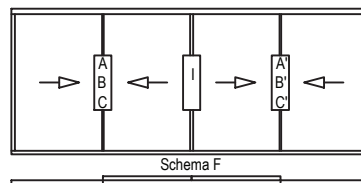
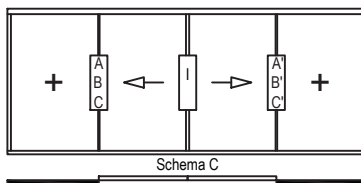


Mittelpartie:

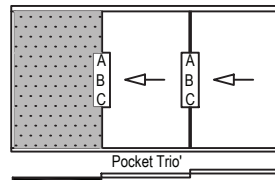
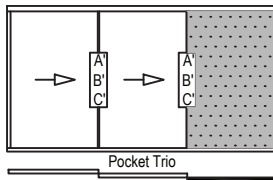
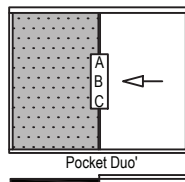
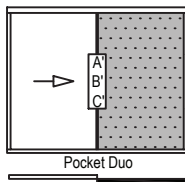
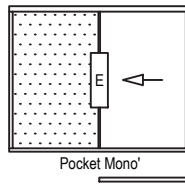
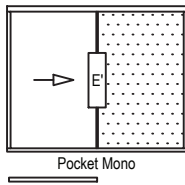
A, B, C, D, E = Seitenöffnung

F, G, H, I = Mittelöffnung

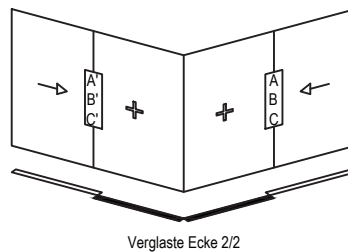
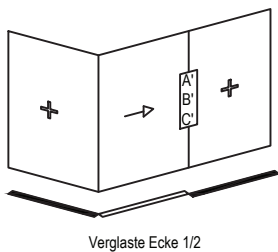
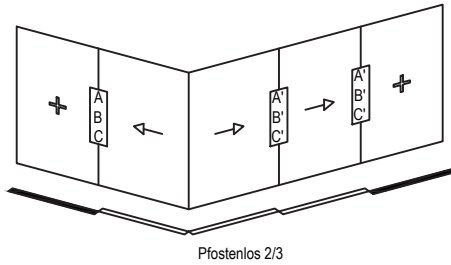
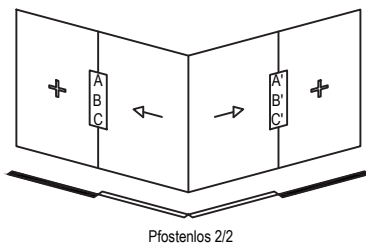
+ = Festteil



Öffnungsarten Vorbeiführung und Ecke (Ansicht von Aussen) Types d'ouverture galandage et angle (vue de l'extérieur)

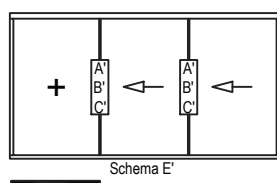
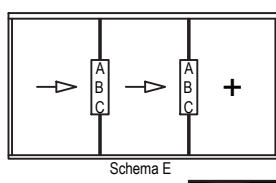
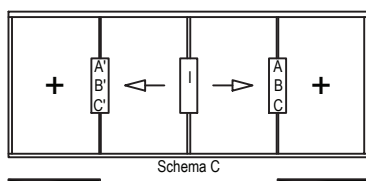
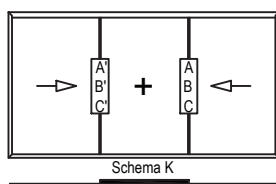
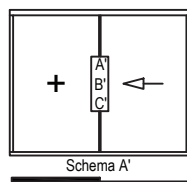
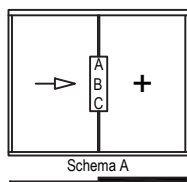


Mittelpartie:
A, B, C, D, E = Seitenöffnung
F, G, H, I = Mittelöffnung
+ = Festteil



Öffnungsarten Flügel aussen (Ansicht von Aussen)

Types d'ouverture vantail extérieur (vue de l'extérieur)

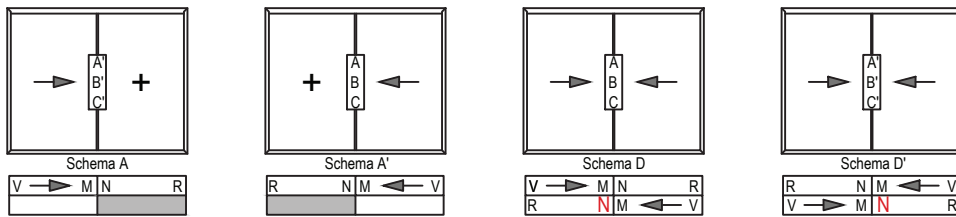


Mittelpartie:

A, B, C, D, E = Seitenöffnung
F, G, H, I = Mittelöffnung
+ = Festteil

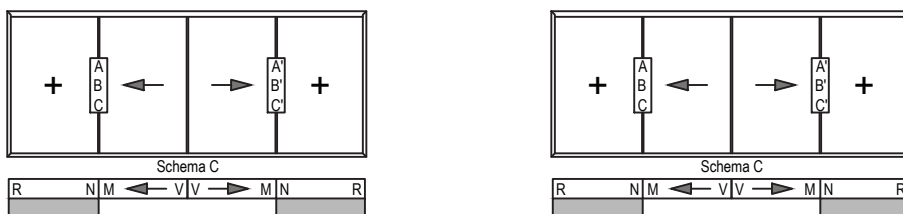
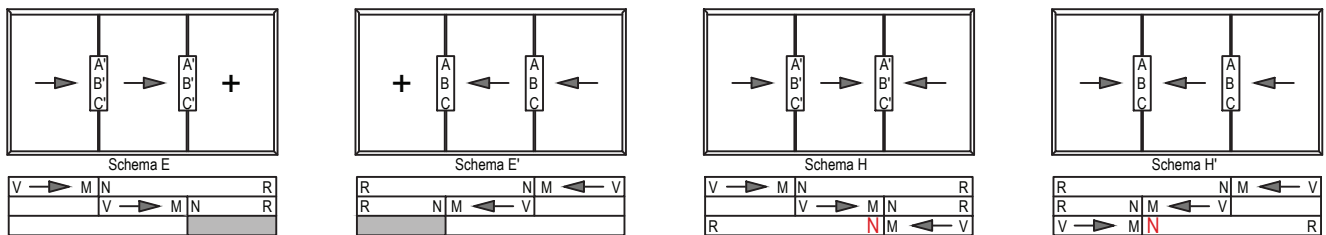
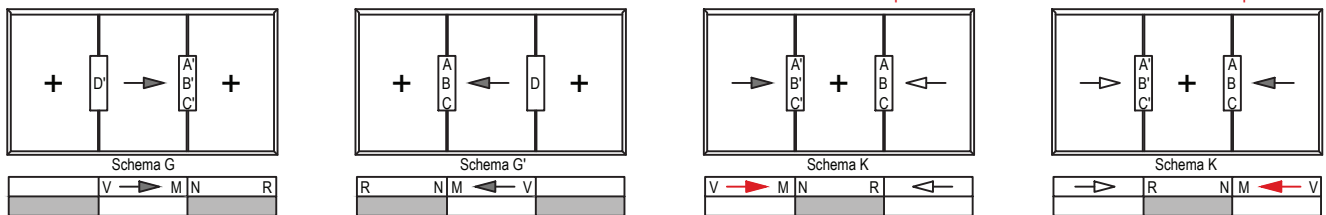
Anordnung Motor-Elemente (Ansicht von Aussen)

Possibilité de motorisation (vue de l'extérieur)

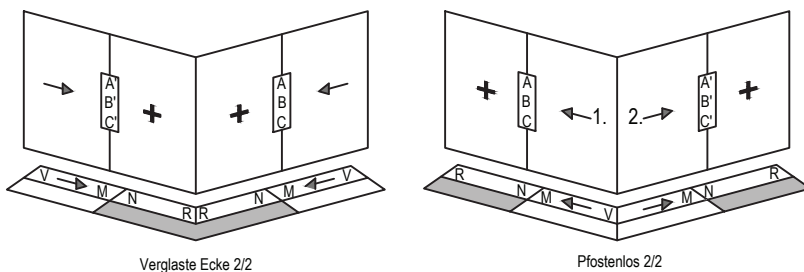


nur 1 Flügel motorisiert möglich!
Qu'un vantail motorisé possible!

nur 1 Flügel motorisiert möglich!
Qu'un vantail motorisé possible!



Mittelpartie:
 A, B, C, D, E = Seitenöffnung
 F, G, H, I = Mittelöffnung
 + = Festteil



Motorisiert:
 M = Motor
 N = Notentriegelung
 R = Umlenkrolle
 V = Verriegelung