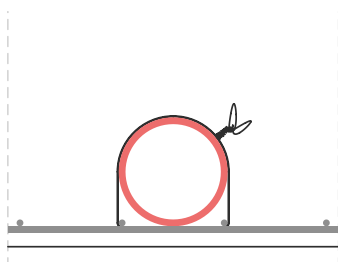
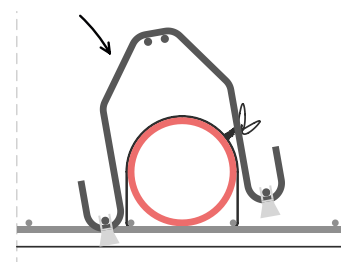


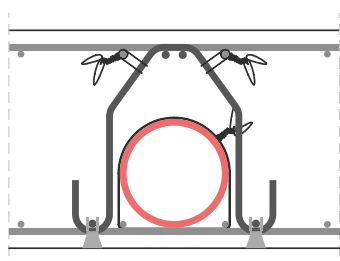
**1** Poser la conduite



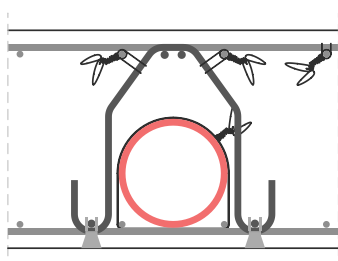
**2** Fixer la conduite à l'armature inférieure



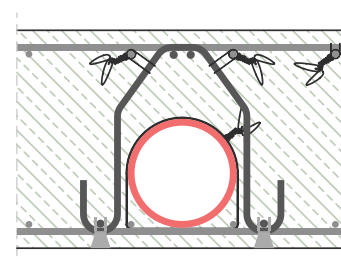
**3** Poser les éléments **FIROLA®**  
1 élément tous les 150 mm



**4** Fixer les éléments **FIROLA®** à l'armature supérieure

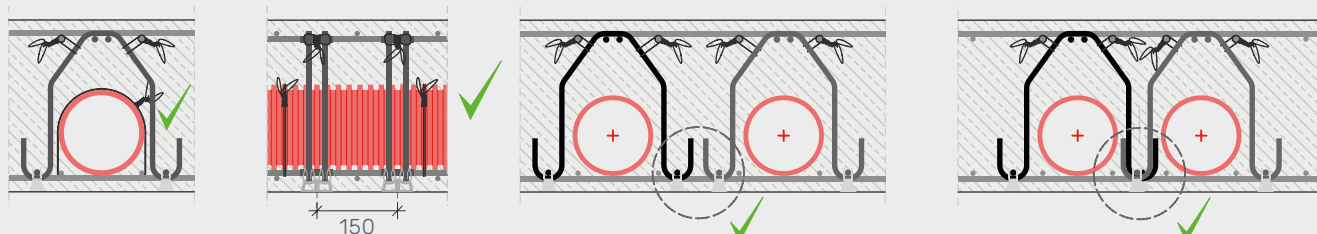


**5** Fixer l'armature supérieure



**6** Bétonner la dalle

### Correct



Poser les éléments **FIROLA®** à la **verticale**.

### Incorrect

