

Designed by	Checked by	Approved by	Date	Date
FS		DM	16.01.2017	16.01.2017

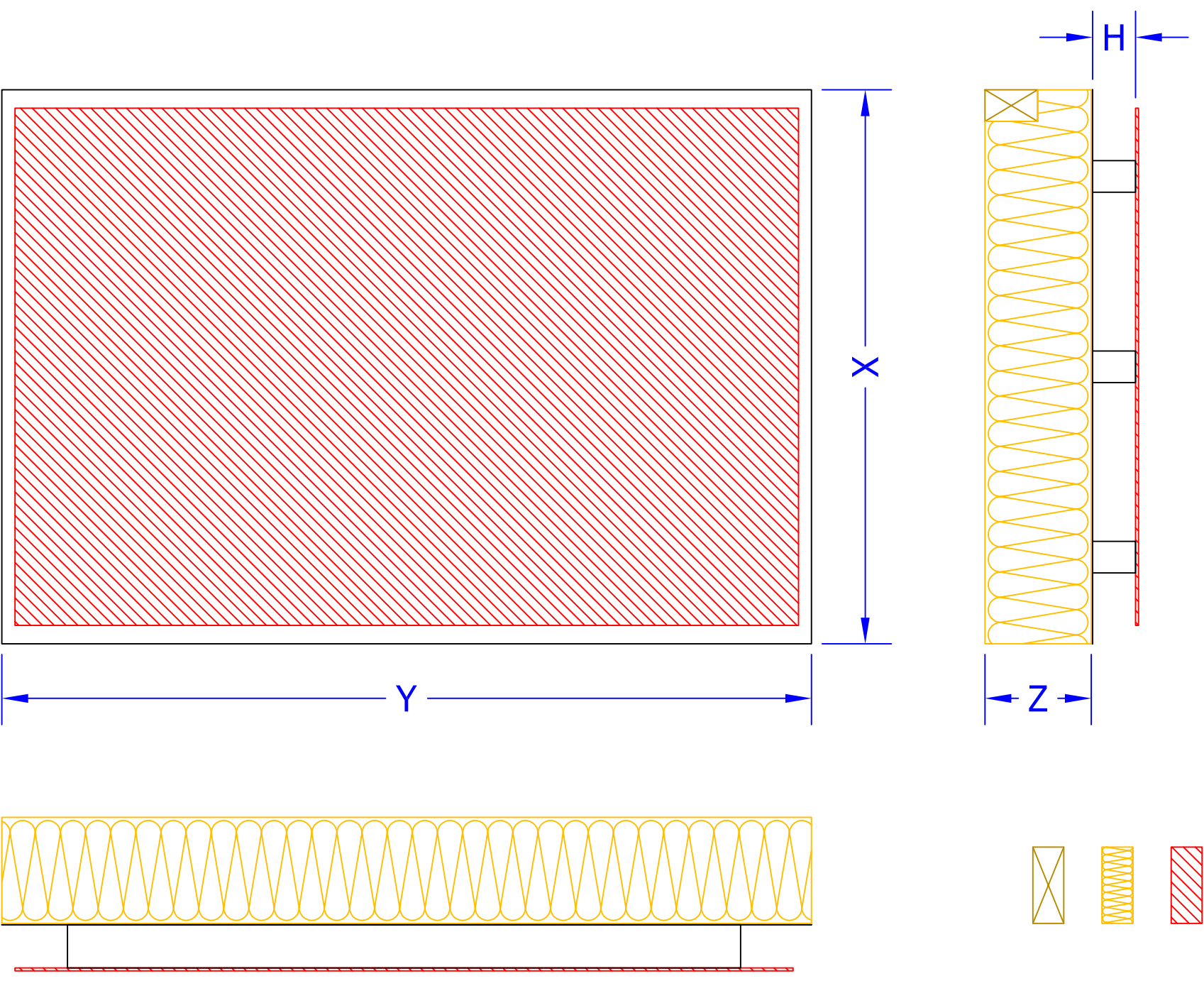
**DESIGNENERGY**  
 structurally integrated solar building solutions  
 CONFIDENTIAL, PROPRIETARY AND/OR SUBJECT TO NDA

TCR 600

**TCR 636 S**

Edition 00

Sheet 1 / 1



FV / PV / PV

LANA DI ROCCIA / STEINWOLLE / LAINE DE PIERRE

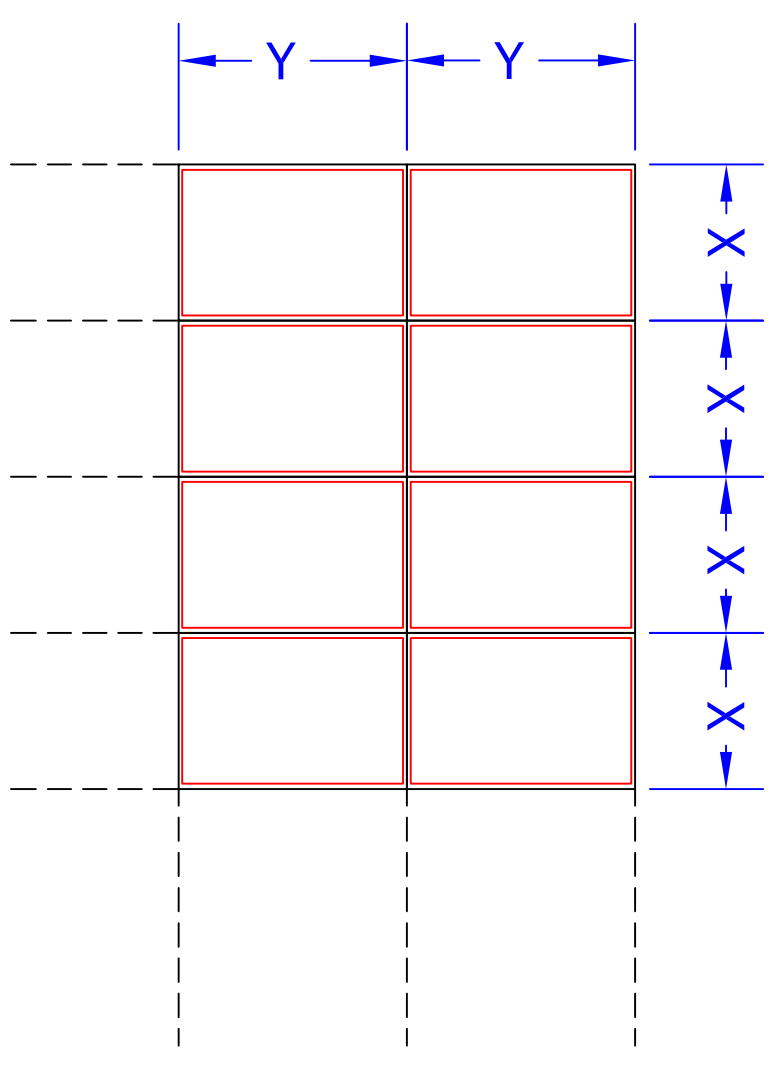
LEGNO / HOLZ / BOIS

$X = 1055 \text{ mm}$

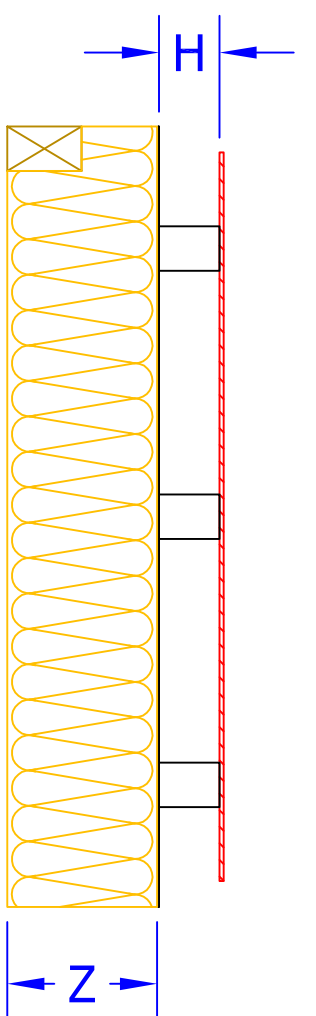
$Y = 1542 \text{ mm}$

$Z = 60 \div 200 \text{ mm}$

$H = 60 \text{ mm}; 80 \text{ mm}; 100 \text{ mm}$



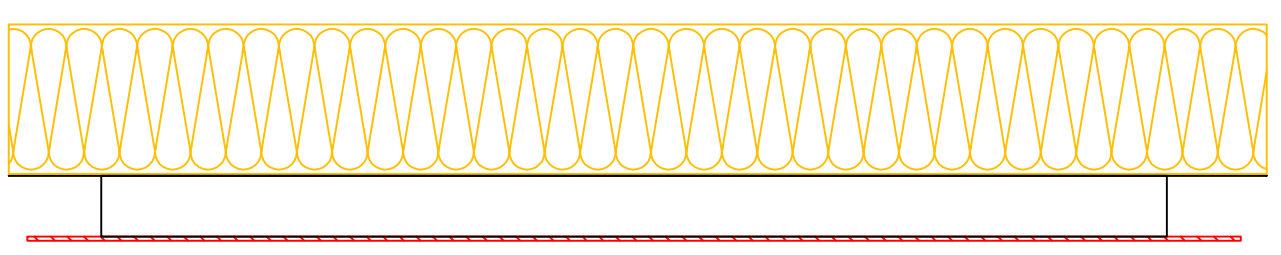
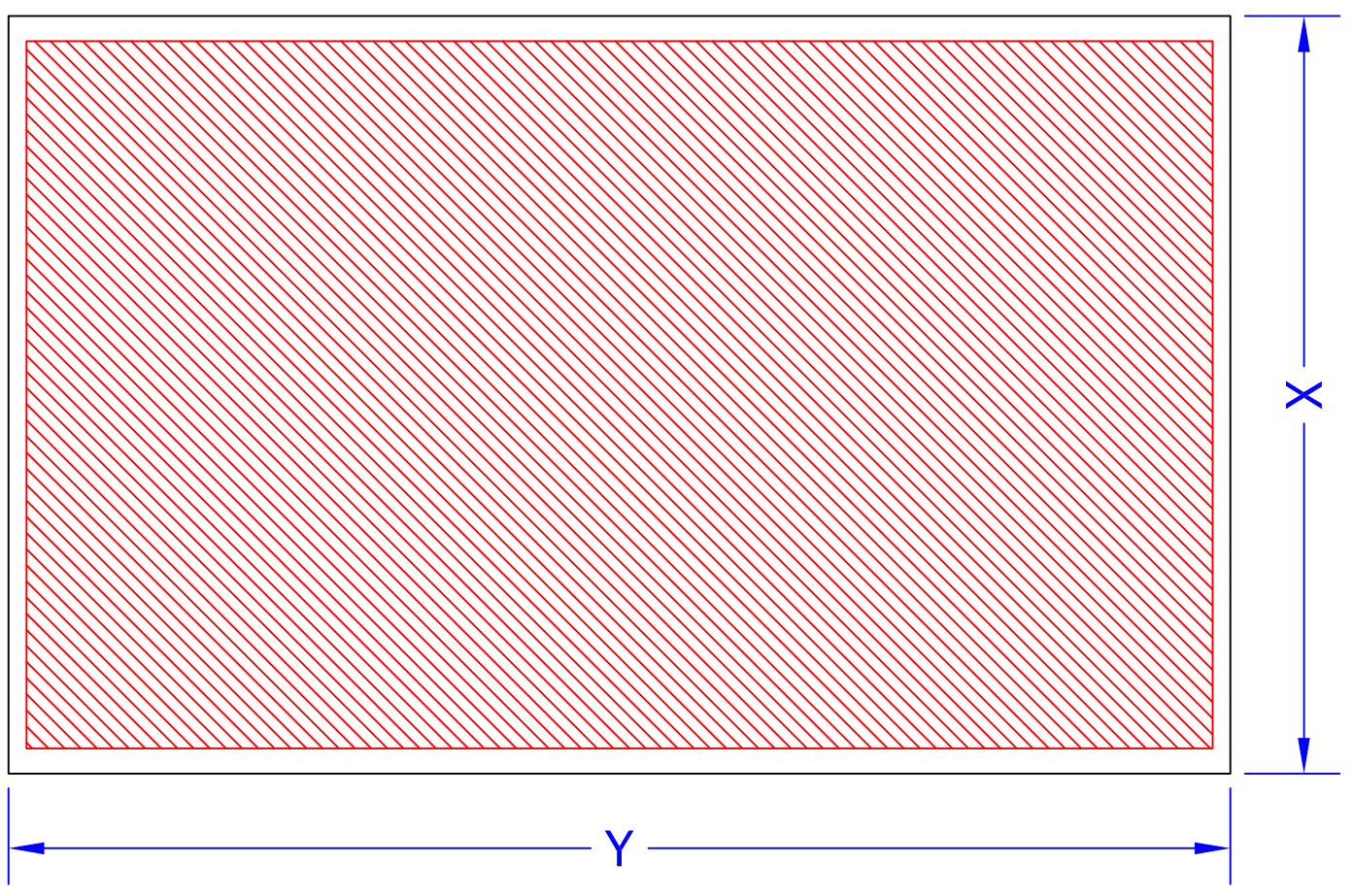
Designed by	Checked by	Approved by	Date	Date	TCR 654 S	Edition	Sheet
FS	DM	DM	16.01.2017	16.01.2017			
 structurally integrated solar building solutions <small>CONFIDENTIAL, PROPRIETARY AND/OR SUBJECT TO NDA</small>		TCR 600	00	1 / 1			



FV / PV / PV

LANA DI ROCCIA / STEINWOLLE / LAINE DE PIERRE

LEGNO / HOLZ / BOIS

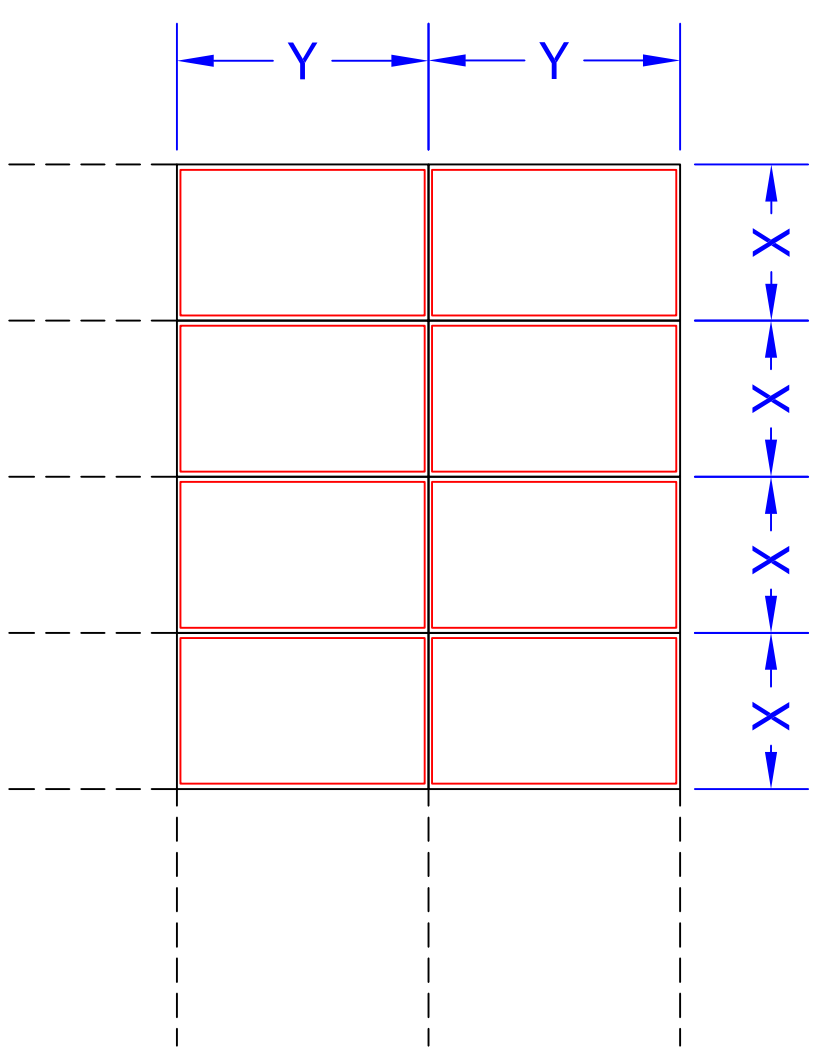


X = 1055 mm

Y = 1700 mm

Z = 60 ÷ 200 mm

H = 60 mm; 80 mm; 100 mm



Designed by	Checked by	Approved by	Date	Date
FS		DM	16.01.2017	29.11.2016

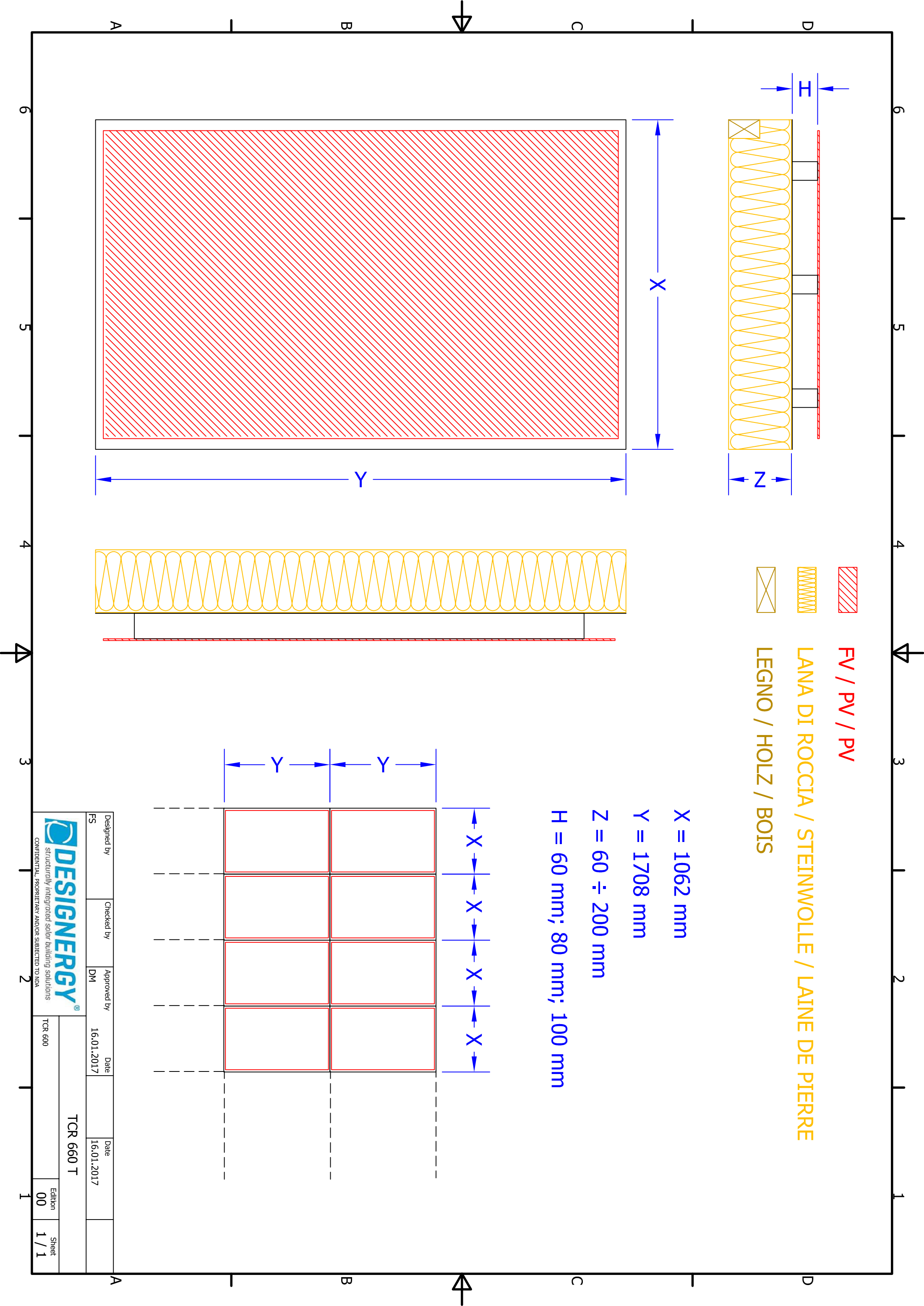
**DESIGNENERGY**  
 structurally integrated solar building solutions  
 CONFIDENTIAL, PROPRIETARY AND/OR SUBJECT TO NDA

TCR 600 S

TCR 600

Edition 00

Sheet 1 / 1



**FV / PV / PV**

**LANA DI ROCCIA / STEINWOLLE / LAINE DE PIERRE**

**LEGNO / HOLZ / BOIS**

**X = 1062 mm**

**Y = 1708 mm**

**Z = 60 ÷ 200 mm**

**H = 60 mm; 80 mm; 100 mm**

Designed by	Checked by	Approved by	Date	Date
FS		DM	16.01.2017	16.01.2017

**DESIGNENERGY**  
 structurally integrated solar building solutions  
 CONFIDENTIAL, PROPRIETARY AND/OR SUBJECTED TO NDA

TCR 600

TCR 660 T

Edition 00

Sheet 1 / 1